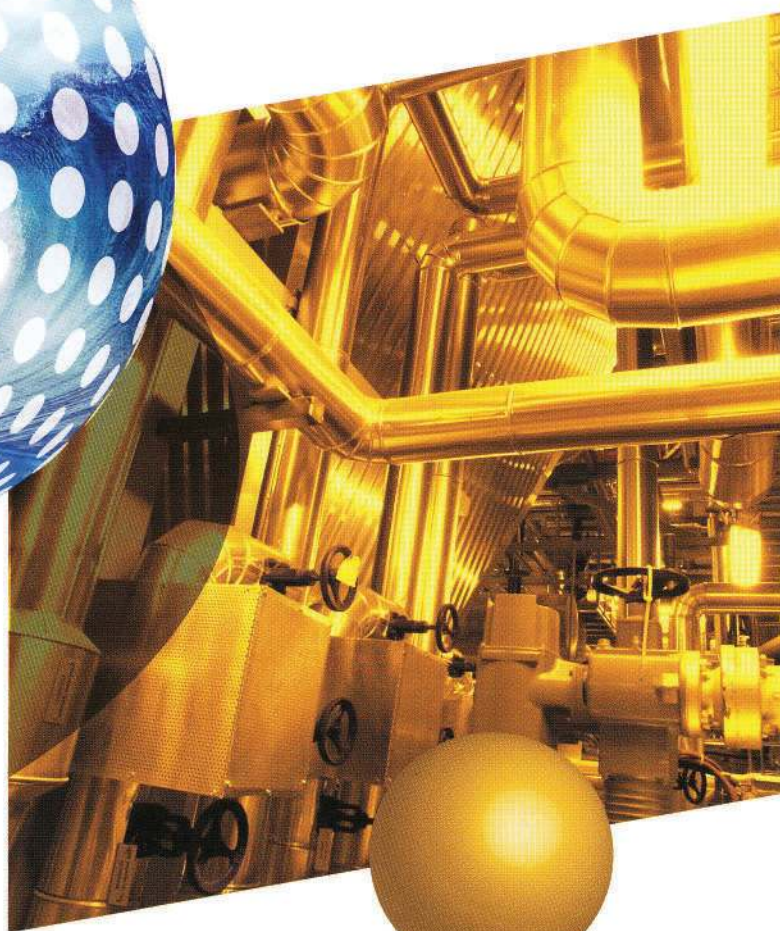
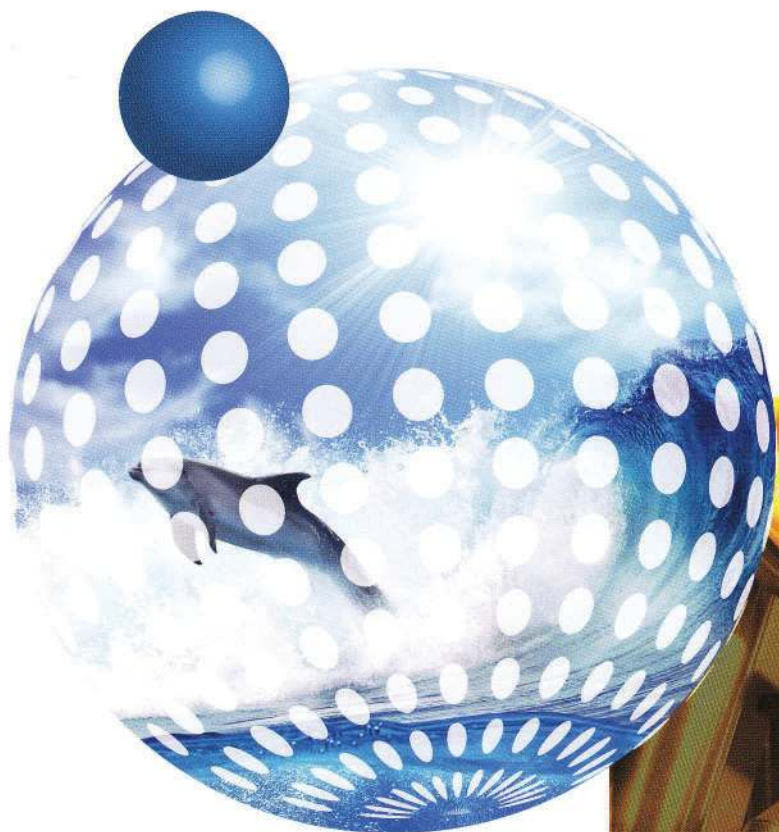


PACIFICGOLD®

Powder Coating colours
for decor & industry



INCLUDING AN INTRODUCTION TO THE DULUX® ARCHITECTURAL RANGE

The Dulux® Pacificgold® functional and decorative product range.

ARMOURSPRAY® EP 910

Armourspray® Environmental Protection has been formulated to perform in environments where most other powders would find the going too tough. Dulux® Armourspray® EP, as an antigraffiti coating is recommended for use on public transport, street furniture, signs and playground equipment where graffiti is most prominent.

Dulux® Armourspray® EP has been used on projects including the Great South Pacific Express and Telecom New Zealand phone boxes.

PACIFICGOLD® COPOL™ 953

Pacificgold® Copol™ 953 line is a range of polyester epoxy powder coatings and is recommended for use in applications where resistance to general chemicals and reasonable hardness is required. Pacificgold® Copol™ powders are used extensively in shelving for supermarkets and industry, for tapware, automotive sub components and appliances.

PACIFICGOLD® PG 288™

Pacificgold® PG288™ Line is a range of tough polyester powder coatings that may be used on a multitude of metal substrates: from window frames to shelving, office furniture to pool fences, whitegoods to garden tools, outdoor furniture to automotive components.

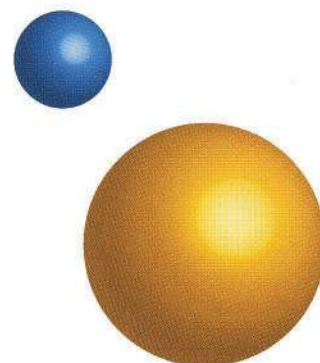
PG288™ is hardy and durable. The matt and satin finishes are ideal for use on metal areas exposed to abrasion from handling, stacking or people traffic. PG288™ is often used for shop front frames, commercial furniture and shelving.

PYROTEC™ 913, 939 and 979

Pyrotec™ 913, 939 and 979 lines are a range of stock and made to order heat resistant powders called Pyrotec™ HR (Heat Resistant). The range includes Pyrotec™ HR180, Pyrotec™ HR350 and Pyrotec™ HR500. The Pacificgold® Pyrotec™ HR series are by nature low gloss finishes but can be formulated so that they appear smooth. Textures and special FX such as metallic are also available.

ZINCSHIELD™ PRIMER 990

Zincshield™ Primer 990 line is designed to provide additional corrosion inhibition on abrasively blasted steel products. The Zinc component provides sacrificial opportunities to the steel whilst the epoxy resin system provides improved chemical resistance and coating adhesion.



The Pacificgold® colour range

These colours have been selected to provide an exciting range of finishes principally for industrial applications. These finishes have not been designed for architectural applications and further information should be sought before specifying any of these colours for architectural joinery, cladding or fittings.



The lucent range of colours are transparently designed for use over polished or bright substrates for interior decorative use only.

Information included in the colour matrix on this colour chart includes an estimation of the expected exterior durability of each colour on a scale of 1 - 5 where 1 is an interior only colour through 5 where the colour is rated very light fast. These values are estimations only and no warranty is attached or expressed.

Gloss levels are detailed as are light reflectancy percentages.

Each colour has an RGB value for use with computer aided design programs where colour representation is required.

The colours represented on this colour chart are indications only. They are as close to the actual product colours as modern printing processes allow and have been matched to outdoor daylight viewing. The colour appearance may vary according to light source.

Where colour is critical, samples of the actual powder coating should be sought from Dulux Powder & Industrial Coatings.

When specifying these colours, be sure to specify the entire product reference and name. There are many examples of different products having the same name for quite different colours or finishes.



PACIFICGOLD®

Powder Coating colours for decor & industry

YELLOW & ORANGE



2004S HAPPY



2140S CARTERTON



59623 SCHWEPPES YELLOW



33617 YELLOW GOLD



2141S HOUHORA



51439 ORANGE X15



4008G TINGLE GLOSS



4068G LUCENT ORANGE

WHITE



58861 ARCTIC WHITE



96914 AG ARCTIC WHITE



97434 PEARL WHITE



58864 CHALK USA



2139G SANDSPIT



58728 SILVER QUILL



7381G GLINKS GULLY



2045G LUCENT YELLOW

BLUE



58613 SKY



51865 HURSTMERE ROAD



57273 ROYAL BLUE



19990 SPACE BLUE



57262 POMMEL BLUE



58610 DULUX® BLUE



51926 DARK VIOLET



5072G LUCENT SAPPHIRE

RED



4056G TICKLE PINK



4155G FLAME RED



58413 BRIGHT RED



50735 SIGNAL RED



56995 COLA RED



41855 THREE KINGS



57074 WINEBERRY



4067G LUCENT RUBY

GREY & PEARL



32786 APO GREY



97488 GREYWACKE



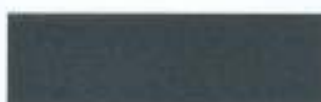
7380X SILVER 2K KINETIC®



7182K NZ BRIGHT SILVER KINETIC®



7134K NATURAL STEEL KINETIC®



57127 ANTIQUE STEEL



58653 HIGH GLOSS BLACK



9045G LUCENT CHAR

GREEN



58571 MISTLETOE



6006S MAMBA GREEN



7382S PENCARROW



6205S MANFIELD



6204S SHOTOVER STREET



57290 HAWTHORN GREEN



81879 DEEP BRUNSWICK GREEN



6066G LUCENT EMERALD



SURREAL FX

33641 MANNEX WHITE



57289 CREAM RIPPLE



57124 BLACK WATERED SILK



57242 BLACK SAND TEXTURE



57243 SATIN BLACK RIPPLE



51677 GRAPHITE RIPPLE



85180 BLACK HAMMERTONE



2046G LUCENT GOLD

Colour specifications



YELLOW & ORANGE

	Line#	Gloss Level	UV Index	RGB	Light Reflectancy
2004S Happy	288	S	3	250,213,62	71
2140S Carterton	288	S	3	249,212,100	70
59623 Schweppes Yellow	288	G	2	255,200,9	68
33617 Yellow Gold	288	G	2	249,169,30	52
2141S Houhora	288	S	3	200,155,89	40
51439 Orange X15	288	G	2	235,107,52	32
4008G Tingle Gloss	288	G	3	240,89,28	29
4068G Lucent Orange	288	G	1	208,86,36	23

WHITE

58861 Arctic White	288	G	3	235,241,248	89
96914 AG Arctic White	910	G	3	237, 242, 248	89
97434 Pearl White	288	G	3	251,249,240	95
58864 Chalk USA	288	G	3	242,239,224	87
2139G Sandsplit	288	G	3	243,234,214	83
58728 Silver Quill	288	G	3	204,205,201	64
7381G Glinks Gully	288	G	3	214,206,191	65
2045G Lucent Yellow	288	G	1	197,189,59	53

BLUE

58613 Sky	288	G	3	0,124,74	17
5186S Hurstmere Road	288	S	3	41,88,154	14
57273 Royal Blue	288	G	3	43,59,105	7
19990 Space Blue	288	G	3	46,57,115	7
57262 Pommel Blue	288	G	3	45,94,134	10
58610 Dulux® Blue	288	S	3	49,58,80	7
51926 Dark Violet	288	G	3	85,60,113	9
5072G Lucent Sapphire	288	G	1	0,90,163	12

RED

4056G Tickle Pink	288	G	2	203,67,106	21
4155G Flame Red	288	G	2	166,58,60	12
58413 Bright Red	288	G	2	167,50,49	13
5073S Signal Red	288	G	2	178,56,44	15
5699S Cola Red	915	S	3	202,49,54	18
4185S Three Kings	288	S	3	167,84,74	15
57074 Wineberry	288	G	2	112,46,51	8
4067G Lucent Ruby	288	G	1	197,63,91	19

GREY & PEARL

32786 APO Grey	915	S	4	171,172,171	46
97488 Greywacke	201	S	3	103,110,113	19
7380K Silver 2K Kinetic®	288	S	4	143,144,141	32
7182K NZ Bright Silver Kinetic®	288	S	4	153,155,157	38
7134K Natural Steel Kinetic®	915	S	4	118,120,121	23
57127 Antique Steel	288	S	4	80,81,83	12
58653 High Gloss Black	288	G	3	47,47,47	5
9045G Lucent Char	288	G	1	77,74,69	10

GREEN

58571 Mistletoe	288	G	3	12,110,60	15
6006S Mamba Green	288	S	3	125,169,58	38
7382S Pencarrow	288	S	3	110,124,116	23
6205S Manfield	288	S	3	118,145,118	26
6204S Shotover Street	288	S	3	0,131,72	20
57290 Hawthorn Green	915	S	3	45,68,57	8
81879 Deep Brunswick Green	959	G	3	45,62,58	7
6066G Lucent Emerald	288	G	1	86,167,119	35

SURREAL FX

33641 Mannex White	901	M	3	243,246,241	91
57289 Cream Ripple	288	G	3	230,222,201	73
57124 Black Watered Silk	930	M	2	63,63,64	5
57242 Black Sand Texture	288	M	2	62,62,63	5
57243 Satin Black Ripple	953	M	1	63,64,64	5
51677 Graphite Ripple	953	M	1	118,118,117	18
85180 Black Hammertone	953	G	1	90,91,93	11
2046G Lucent Gold	288	G	1	212,159,66	43

UV Index	Line #	Chemistry	Element	
Very Good	5	288 PG288® Polyester	Gloss Level	Gloss Measurement taken @ 60°
Good	4	915 Duralloy Polyester	Gloss > 75%	Satin 55-75%
Moderate	3	953 Hybrid	Low Sheen 30-55%	Matt < 30%
Low	2	910 Antigrffiti	RGB	Red, Green & Blue Values
Interior Only	1		Light Reflectancy	% of Light Reflected by the colour



The Dulux® architectural range

Dulux® offer a range of powder coatings designed for use on architectural aluminium joinery and accessories. These powder coatings can also be used over a myriad of substrates and may be used in conjunction with Dulux® Zincshield™ over mild steel. Duralloy®, Duratec® and Electro™ all have their own colour cards, featuring a range of stock colours while Fluoroset® FP is a made to order product.



Dulux® Duralloy® Generation 2 is a new high durability performance powder coating that has very good scratch resistance properties and a 30% improvement in UV resistance over standard powder coatings. Dulux® Duralloy® Generation 2 has improved appearance, tougher formulation and is available as stock in over 80 fashionable solid and pearlescent colours. See the Duralloy® Colour Guide for additional colours and information.



Dulux® Duratec® is recommended for use on premium residential and commercial developments. Duratecs chemistry ensures very good scratch and mar resistance in busy traffic areas within business offices, hospitals and shopping districts and has excellent external properties to withstand the harsh New Zealand climate including salt spray.



FLUOROSET® FP

Fluoroset® FP has been formulated specifically for prestigious architectural applications where superior colour stability, gloss retention, mar resistance and general serviceability is demanded. Fluoroset® FP exceeds the performance of high and super performance polyester powder coatings and is formulated using 100% fluoropolymer resin. As no other resins are incorporated, Fluoroset® FP maintains an intrinsic hardness which makes it extremely suitable for use in high traffic zones irrespective of exposure to sunlight.



The Electro™ range is based on high durability polyester technology to produce a tough, very matt yet tactile finish also displaying modern metallic and solid colour effects. In some cases reminiscent of an anodised finish, yet with all the advantages of modern, high durability powder coating. See the Electro™ range colour card for colours and additional information.



For additional information or colour cards, call the Dulux Powder & Industrial Coatings Customer Services team on 0800 800 975.



As lethal as a Silver Bullet

clinikill™ is a very effective tool in the control of bacteria, yeast and fungi. clinikill™ is available in most powder coating chemistries, colours and special FX product and as a consequence may be used in a myriad of environments.

Independent testing by specialist external laboratories to the Japanese industrial Standard JIS Z 2801:2000 has shown clinikill™ technology to be effective against many strains of bacterium, fungi and yeast.

Examples of bacteria tested. Bacillus cereus, E.coli, Pseudomonas aeruginosa, Staphylococcus aureus, Methicillin resistant, Staphylococcus aureus (MRSA), Salmonella enteritidis.



Worth doing, worth Dulux.

New Zealand

Dulux Powder & Industrial Coatings
31B Hillside Road
Glenfield
Auckland 0627
PO Box 10 1886
NSMC
Auckland 0745
New Zealand
T + 64 9 441 8244
F + 64 9 441 8242

Australia

Dulux Powder & Industrial Coatings
1-15 Pound Rd West
Dandenong South Vic 3175
T + 61 3 8787 4500
F + 61 3 8787 4542

Singapore & South East Asia

DGL International
Blk 265, #02-275
Serangoon Central Drive
Singapore 550265
T + 65 6838 1010
F + 645 6733 5125

OR VISIT

www.duluxpowdercoatings.co.nz

www.duluxpowders.com.au

www.dglpowders.co.nz

The word Dulux®, and the Dulux® mark are trademarks of the Dulux® Group of Companies. Other marks followed by the ® are registered trademarks. Marks followed by the symbol ™ are trademarks.

DISCLAIMER: Any advice, recommendation, information, assistance or service provided by Dulux Powder & Industrial Coatings in relation to goods manufactured by it or their use and application is given in good faith and is believed by Dulux Powder & Industrial Coatings to be appropriate and reliable. However, any advice, recommendation, information, assistance or service provided by Dulux Powder & Industrial Coatings provided without liability or responsibility PROVIDED THAT the foregoing shall not exclude, limit, restrict or modify the right entitlements and remedies conferred upon any person or the liabilities imposed upon Dulux Powder & Industrial Coatings by any condition or warranty implied by applicable legislation, regulation or other Government ordinance voiding or prohibiting such exclusion, limitation or modification.

PACIFICGOLD

Dulux®
POWDER & INDUSTRIAL COATINGS